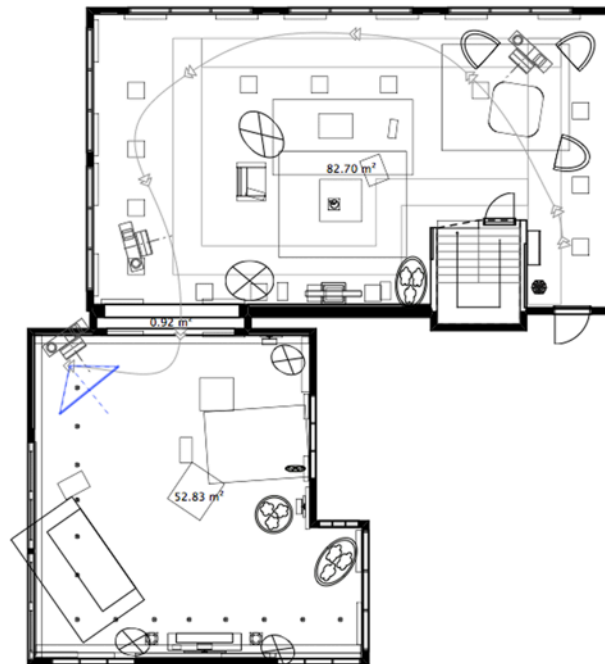




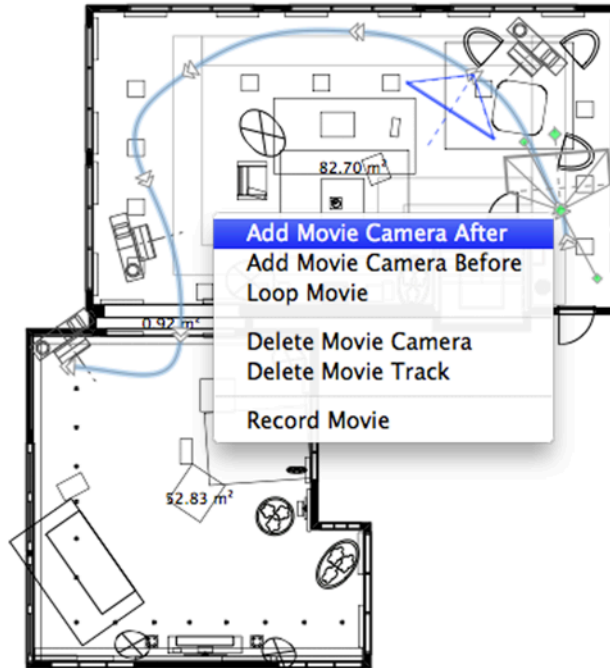
Creating Movies

This tutorial shows you how to create a movie track and export a video of your interior. This PDF is meant to serve as a companion to the [video tutorial](#) of the same name.

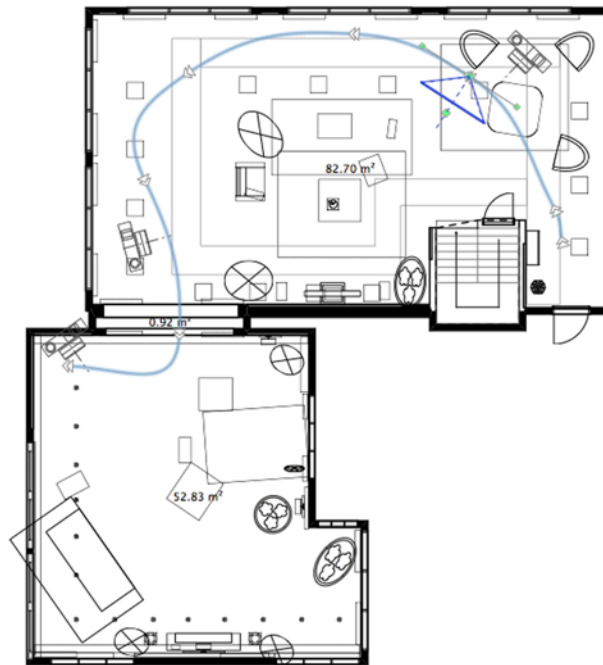
- 1. Understanding movie tracks (00:07).** Before exporting a **QuickTime** movie, you need to create a movie track. This lets the program know the trajectory and path of the video. When doing this, it is best to create the actual track in 2D and leave the *3D View* for fine tuning your perspectives.
- 2. Draw your movie track (00:25).** Select the **Movie Track** tool in the tool bar and jump over to the canvas. Click and hold to place a camera. Without letting up on the mouse, move the cursor to change the angle of the camera. Continue until your track is complete, and then place your final camera and create an end point by double clicking on the canvas.



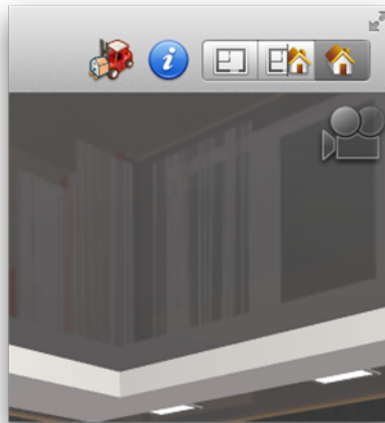
- 3. Adding cameras to an existing track (00:56).** To add a new camera, simply click on an existing one and select **Add Camera After** or **Add Camera Before**. You can then drag the camera along the track to position it where you need it.



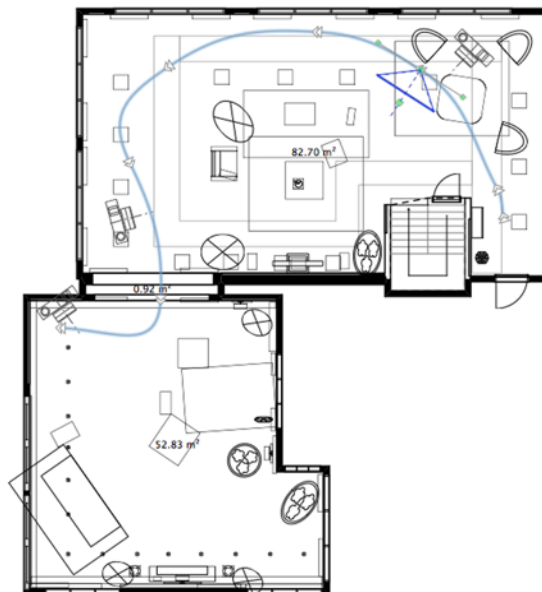
- 4. Adjusting the trajectory (01:04).** When you click on any camera, two handles appear. Dragging these allows you to adjust the curve of your trajectory without moving the camera.



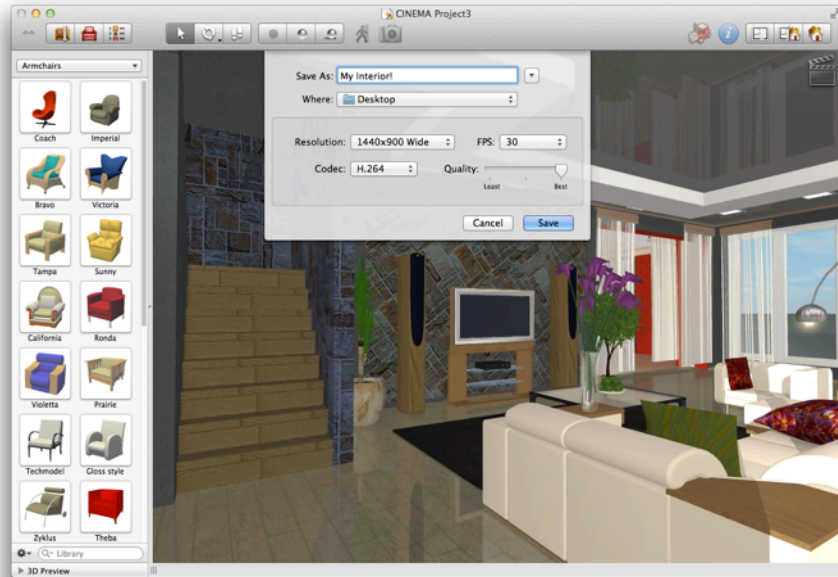
- 5. Editing the perspective of cameras (01:15).** For this, it's best to switch to the *3D View*. Go the *Cameras Properties* tab of the *Inspector* and open the list of cameras in your movie track. When you select one, a translucent icon appears in the top right corner of the *3D View*. This means that any movement made with the walk around controls change the perspective.



- 6. Be sure to check the 2D view again (01:50).** After editing perspectives, always check back to make sure your trajectory hasn't changed drastically.



- 7. Exporting views (02:00).** In the *Inspector*, select your movie track and click **Record Movie**. Type in a filename, choose a destination, and set up the video options. Then click **Save**. Note that it is recommended that you first export a video at lower quality to check that you are satisfied with the perspectives and trajectory.



8. Share with your friends (1:29). So now that you have a 3D walkthrough of your interior, start sending it to your friends now!